

Technical Parameter

| Type | KSCAN20 | |
|--|---|-----------------------------|
| Scan mode | Standard mode R | Hyperfine mode B |
| Laser source | 7 red laser crosses(+ 1 extra red line) | 5 blue parallel laser lines |
| Accuracy | 0.020 mm | |
| Built-in photogrammetry | Support | |
| Hyperfine scan | Support | |
| Volumetric accuracy (based on part size) | 0.020 mm+0.035 mm/m | 0.010 mm+0.035 mm/m |
| Volumetric accuracy with high-precision reference bar | 0.020 mm/m | |
| Resolution | 0.050 mm | 0.010 mm |
| Measurement rate | 650,000 measurements/s | |
| Laser class | CLASS II (eye-safe) | |
| Scanning area | 550 mm×600 mm | |
| Scanning area (photogrammetry) | 2500 mm×3000 mm | |
| Stand-off distance | 500 mm | 180 mm |
| Depth of field | 620 mm | 200 mm |
| Depth of field (photogrammetry) | 2500 mm | |
| Single point repeatability | 0.030 mm | |
| Tracking frequency (portable CMM) | 60 hz | |
| Edge accuracy | 0.030 mm | |
| Pipe inspection in software | Support YBC/LRA data | |
| Output formats | .stl, .ply, .obj, .igs, .stp, .wrl, .xyz, .dae, .fbx, .ma, .asc or customized | |
| Interface mode | USB 3.0 | |
| Operating temperature range | -10~40 °C | |
| Patents | CN204902790U, CN206905709U, CN107202554, CN204902785U, CN106403845, WO2018049843, CN106500627, WO2018072434, CN106500628, WO2018072433, CN206132003U, CN104501740, US10309770B2 | |

SCANTECH™



**KSCAN
3D SCANNER**

Dual Laser mode

Photogrammetry

Probing

SCANTECH (HANGZHOU) CO., LTD

Building 12, No.998,Wenyi West Road, Yuhang District, Hangzhou,
Zhejiang Province 310000 China
Tel: 0086-571-85370380 Fax: 0086-571-85370381
E-mail: info@sikantech.com
Website: www.3d-scantech.com

SCANTECH™

Authorized Distributor

Copyright ©

SCANTECH (HANGZHOU) CO., LTD



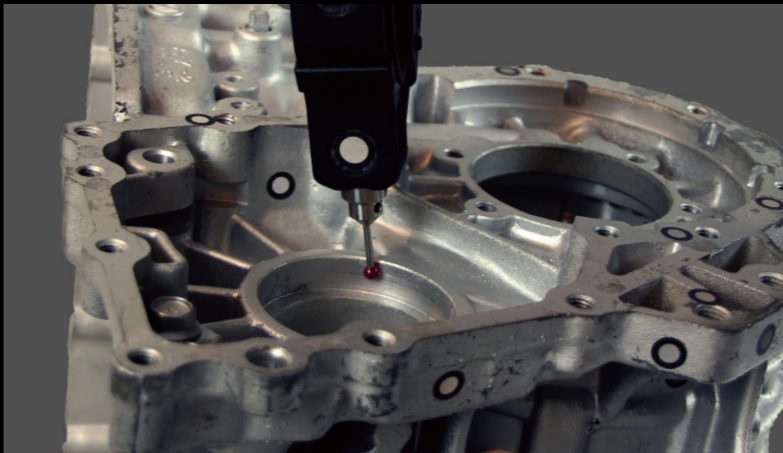
Unlimited Measuring Range

KSCAN has built-in photogrammetry system. The accuracy reaches 0.02mm and the volumetric accuracy is up to 0.035mm/m. It can individually achieve high accurate 3D measurement range from 0.02m to 10m.



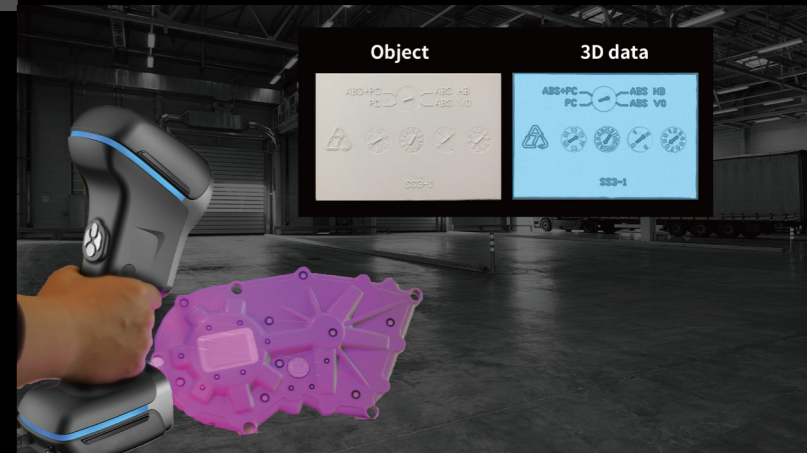
Probing

KSCAN can quickly obtain accurate 3D data with probing and satisfy strict measuring requirements.



Incomparable Resolution

Dual laser scan mode are freely switched. Ultra-high resolution easily captures the texture data of a coin. The resolution is up to 10µm.



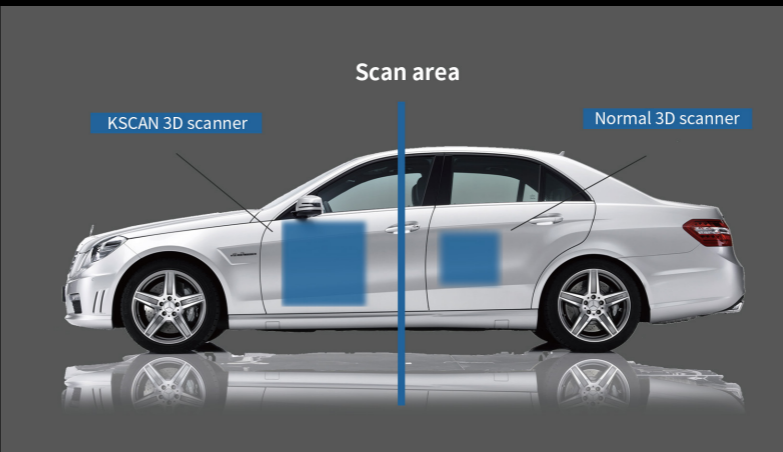
KSCAN

KSCAN 3D Scanner integrates photogrammetry function and dual laser scan mode which are global initiative technologies. The built-in photogrammetry function greatly expands the scan area and improves volumetric accuracy. KSCAN combines high efficiency and ultra-detail benefitting from dual laser scan mode. Moreover, KSCAN offers practical solutions targeting at objects range from 0.02m to 10m.

KSCAN supports probing that can correctly acquire the 3D data of hole, plane, edge, etc. KSCAN can fulfill different measurements and analysis functions such as pipe measurement, deformation detection and 3D inspection with 3D software---ScanViewer, which conducts effective, reliable and full-scale 3D measurement technologies for product design and inspection professionals.

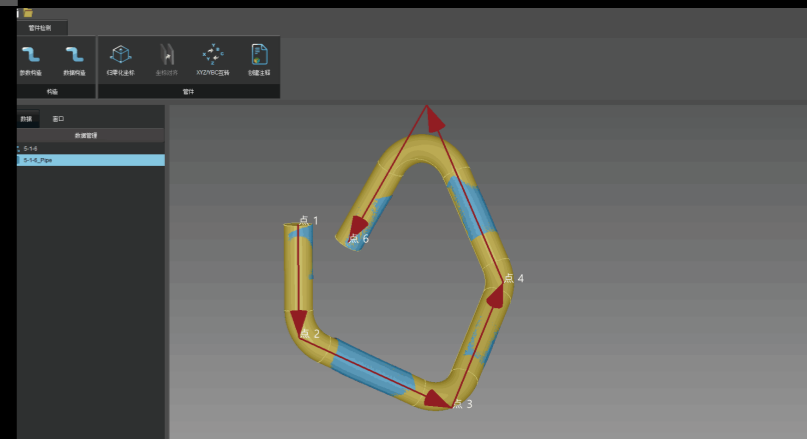
Higher Efficiency

KSCAN upgrades in speed and scan area, which greatly reduces cost of device, time and labor.



Multi-functional 3D Software

KSCAN can work with ScanViewer to fulfill different inspection functions such as pipe measurement, deformation detection and GD&T.



High volumetric accuracy



Probing



Resolution Up to 10µm



Edge inspection